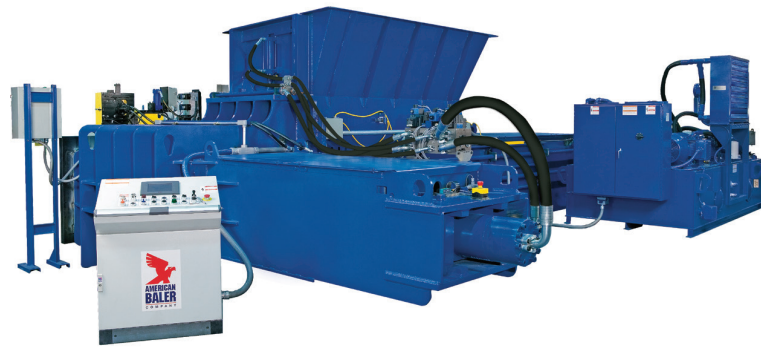


WB Two Ram



WB Two Ram

Wide Box Two Ram Series

Baler type: Wide box two ram baler with shear

Safety: Meets all current ANSI 245.51 Safety Standards

Key Features:

Models: W721, W828

Nominal Feed Opening: 87" x 60", 110" x 60" (long side-no stamper)

Nominal Bale Size: 60" x 30" x 45"

Main Cylinder: 12" bore trunnion design

Main Ram Penetration: Deep penetration into bale chamber

System Pressure: 3000 psi (W721), 3500 psi (W828)

Main Motor: Twin 50, Twin 75 HP, or Triple 75 HP (Model W828 only)

Feed Type: Conveyor, loader

Wire Tying: Accent 470 or L&P Pinnacle II standard; Plastic strapping optional

Shear: Serrated blade standard (straight blades optional)

Door: Combination bale release and bale separation door

Optional: Hydraulic stamper at the shear

Suitable for baling:

OCC, ONP, MOW

High grade paper

Tin and aluminum cans

Plastic buckets and drums

Vented PET & HDPE containers

Copper and aluminum radiators

Old aluminum sheet

Light aluminum extrusions & siding

Aluminum & copper insulated wire



Bellevue, Ohio

800-843-7512

www.americanbaler.com

08/01/14

