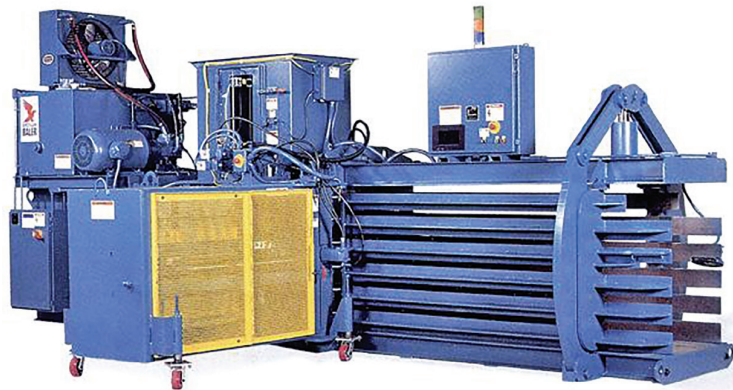


## PAC Series



PAC Series

## PAC Series

**Baler type:** Open-end, auto-tie, single ram, horizontal clearance baler

**Safety:** Meets all current ANSI 245.51 Safety Standards

**Key Features:**

Nominal Feed Opening: 30" x 29"; 40" x 29"; 50" x 29"

Nominal Bale Size: 30" x 43" x variable

Main Cylinder: 6", 7" or 8" bore trunnion design

System Pressure: 3000 psi (6", 7"), 2500 psi (8")

Main Motor: 20, 30, 50, 75, Twin 20 or Twin 30 HP

Feed Type: Air trim system, conveyor

Bale Tying: Five-wire auto-tie (optional manual tie)

**Suitable for baling:**

Corrugated shreds and trim

Converting trim

Shredded documents

Printer's trim and shreds

Folding carton trim and die cuts

Clothing



Bellevue, Ohio

800-843-7512

[www.americanbaler.com](http://www.americanbaler.com)

