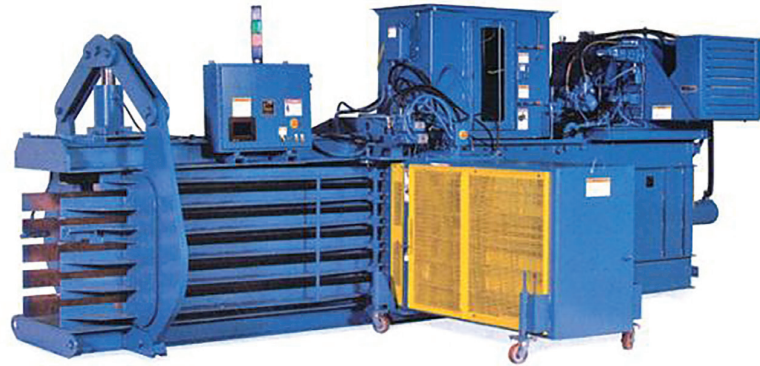


29N Series



29N Series

29N Series

Baler type: Open-end, auto-tie, single ram, horizontal baler

Safety: Meets all current ANSI 245.51 Safety Standards

Key Features:

Nominal Feed Opening: 40" x 29", 50" x 29"

Nominal Bale Size: 30" x 43" x variable

Main Cylinder: 8", 9" or 10" bore trunnion design

System Pressure: 3000 psi

Main Motor: 20, 30, 50, 75, Twin 20, Twin 30 or Twin 50 HP

Feed Type: Air trim system, conveyor

Bale Tying: Five-wire auto-tie (optional manual tie)

Shear: Available with or without shear blade

Suitable for baling:

Corrugated shreds and trim

Converting trim

Printer's trim and shreds

Folding carton trim and die cuts

Shredded documents

High grade paper



Bellevue, Ohio

800-843-7512

www.americanbaler.com

08/01/14

